



Product designation

Product type designation

Auxiliary  
contactor  
BF00

### Contact characteristics

Number of poles	Nr.	4
Rated insulation voltage $U_i$ IEC/EN	V	690
Rated impulse withstand voltage $U_{imp}$	kV	6

Operational frequency

min	Hz	25
max	Hz	400

IEC Conventional free air thermal current  $I_{th}$

A	10
---	----

Protection fuse

gG (IEC)	A	25
----------	---	----

Tightening torque for terminals

min	Nm	1.5
max	Nm	1.8
min	lbin	1.1
max	lbin	1.5

Tightening torque for coil terminal

min	Nm	0.8
max	Nm	1
min	lbin	0.8
max	lbin	0.74

Max number of wires simultaneously connectable

Nr.	2
-----	---

Conductor section

AWG/Kcmil

max	10
-----	----

Flexible w/o lug conductor section

min	mm <sup>2</sup>	1
max	mm <sup>2</sup>	6

Flexible c/w lug conductor section

min	mm <sup>2</sup>	1
max	mm <sup>2</sup>	4

Flexible with insulated spade lug conductor section

min	mm <sup>2</sup>	1
max	mm <sup>2</sup>	4

Power terminal protection according to IEC/EN 60529

IP20 when  
properly wired

### Mechanical features

Operating position

normal allowable	Vertical plan ±30°
---------------------	-----------------------

Fixing

Screw / DIN rail  
35mm

Weight

g	353
---	-----

### Auxiliary contact characteristics

Thermal current I <sub>th</sub>	A	10
IEC/EN 60947-5-1 designation	A600 - P600	
Operating current AC15	230V	A 3
	400V	A 1.9
	500V	A 1.4
Operating current DC12	110V	A 5.7
Operating current DC13	24V	A 5.7
	48V	A 2.9
	60V	A 2.3
	110V	A 1.25
	125V	A 1.1
	220V	A 0.55
	600V	A 0.2
<b>Operations</b>		
Mechanical life	cycles	20000000
<b>Safety related data</b>		
Performance level B10d according to EN/ISO 13489-1	mechanical load	cycles 20000000
EMC compatibility		yes
<b>AC coil operating</b>		
Rated AC voltage at 60Hz	V	24
AC operating voltage		
of 60Hz coil powered at 60Hz		
pick-up	min %Us	80
	max %Us	110
drop-out	min %Us	20
	max %Us	55
AC average coil consumption at 20°C		
of 60Hz coil powered at 60Hz	in-rush holding	VA 75
		VA 9
Dissipation at holding ≤20°C 50Hz	W	2.5
<b>Max cycles frequency</b>		
Mechanical operation	cycles/h	3600
<b>Operating times</b>		
Average time for U <sub>s</sub> control		
in AC		
Closing NO	min ms	8
	max ms	24
Opening NO	min ms	10
	max ms	20
Closing NC	min ms	9
	max ms	25
Opening NC	min ms	9
	max ms	15

### UL technical data

Rated operational voltage AC (UL)	V	600
General USE		
Auxiliary contacts		
AC current	A	10
Contact rating of auxiliary contacts according to UL		A600 - P600

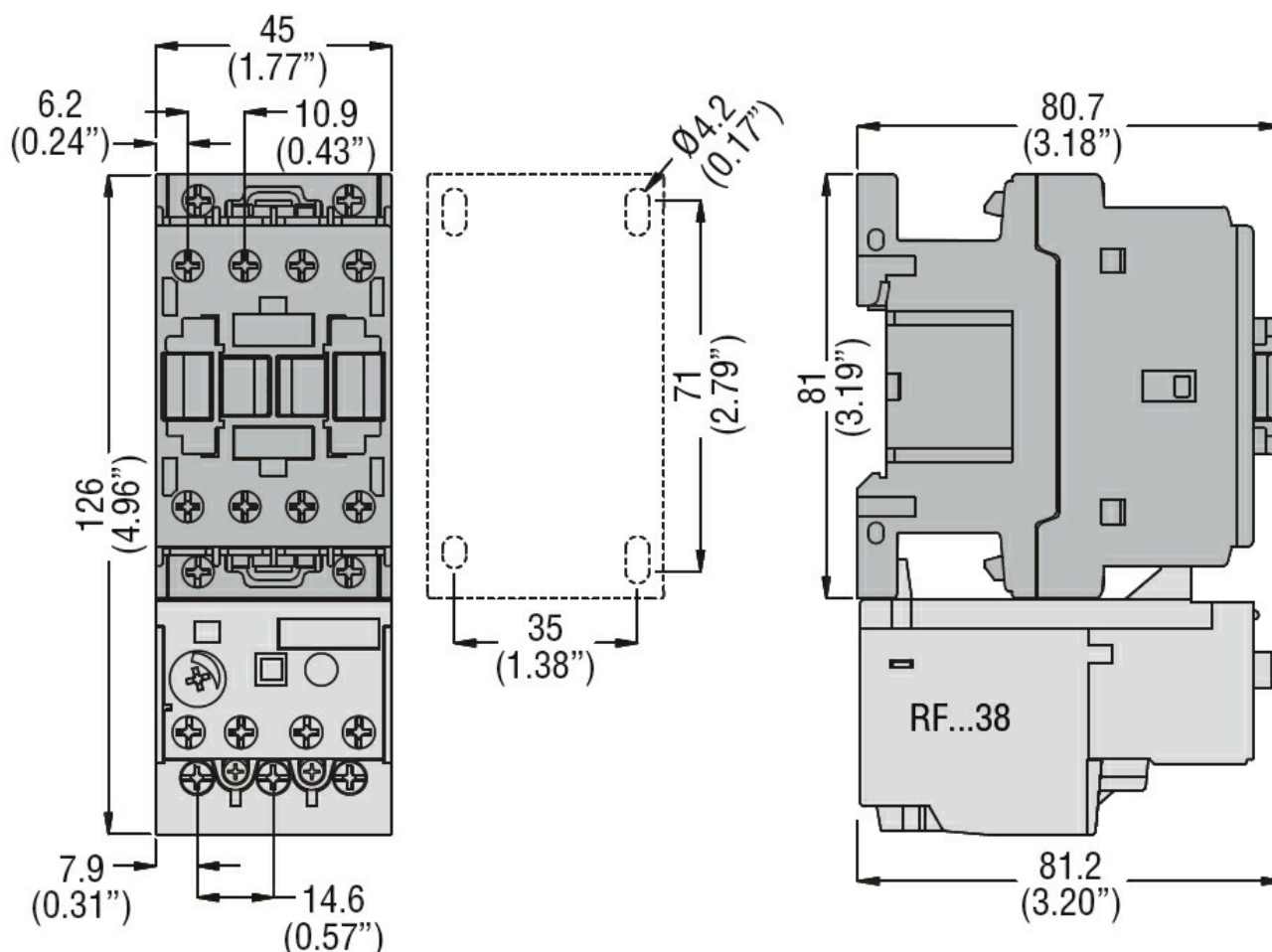
### Ambient conditions

Temperature			
Operating temperature			
	min	°C	-50
	max	°C	70
Storage temperature			
	min	°C	-60
	max	°C	80
Max altitude	m		3000

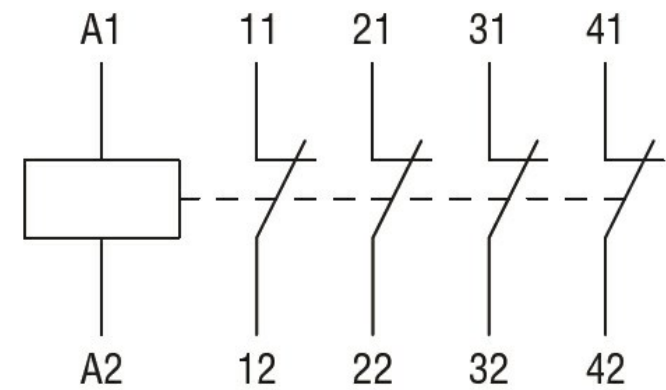
### Resistance & Protection

Pollution degree		3
------------------	--	---

### Dimensions



### Wiring diagrams



Certifications and compliance

Compliance	CSA C22.2 n° 60947-1
	CSA C22.2 n° 60947-5-1
	IEC/EN 60947-1
	IEC/EN 60947-5-1
	UL 60947-1
	UL 60947-5-1

Certificates	CCC
	cULus
	EAC

ETIM classification

ETIM 8.0	EC000196 - Contactor relay
----------	-------------------------------