



Product designation			Auxiliary contactor
Product type designation			BG00
Contact characteristics			
Number of poles	Nr.	4	
Rated insulation voltage Ui IEC/EN	V	690	
Rated impulse withstand voltage Uimp	kV	6	
Operational frequency	min	Hz	25
	max	Hz	400
IEC Conventional free air thermal current Ith	A	10	
Protection fuse	gG (IEC)	A	16
Tightening torque for terminals	min	Nm	0.8
	max	Nm	1
	min	lbin	9
	max	lbin	9
Tightening torque for coil terminal	min	Nm	0.8
	max	Nm	1
	min	lbin	9
	max	lbin	9
Max number of wires simultaneously connectable	Nr.	2	
Conductor section	AWG/Kcmil		
	max	12	
Flexible w/o lug conductor section	min	mm²	0.8
	max	mm²	2.5
Flexible c/w lug conductor section	min	mm²	1.5
	max	mm²	2.5
Flexible with insulated spade lug conductor section	min	mm²	1.5
	max	mm²	2.5
Power terminal protection according to IEC/EN 60529	IP20		
Mechanical features			
Operating position	normal allowable	Vertical plan ±30°	
Fixing	Screw / DIN rail 35mm		
Weight	g	200	
Auxiliary contact characteristics			

Thermal current I _{th}	A	10	
IEC/EN 60947-5-1 designation	A600 - Q600		
Operating current AC15	230V	A	3
	400V	A	1.9
	500V	A	1.4
Operating current DC12	110V	A	2.9
Operating current DC13	24V	A	2.9
	48V	A	1.4
	60V	A	1.2
	110V	A	0.6
	125V	A	0.55
	220V	A	0.3
	600V	A	0.1
Operations			
Mechanical life	cycles	20000000	
Safety related data			
Performance level B10d according to EN/ISO 13489-1	mechanical load	cycles	20000000
EMC compatibility	YES		
AC coil operating			
Rated AC voltage at 50/60Hz	V	230	
AC operating voltage			
	of 50/60Hz coil powered at 50Hz		
	pick-up	min	%Us 75
		max	%Us 115
	drop-out	min	%Us 20
		max	%Us 55
	of 50/60Hz coil powered at 60Hz		
	pick-up	min	%Us 80
		max	%Us 115
	drop-out	min	%Us 20
		max	%Us 55
AC average coil consumption at 20°C			
	of 50/60Hz coil powered at 50Hz		
		in-rush	VA 30
		holding	VA 4
	of 50/60Hz coil powered at 60Hz		
		in-rush	VA 25
		holding	VA 3
	of 60Hz coil powered at 60Hz		
		in-rush	VA 30
		holding	VA 4
Dissipation at holding ≤20°C 50Hz	W	0.9	
Max cycles frequency			
Mechanical operation	cycles/h	3600	
Operating times			

Average time for Us control
in AC

Closing NO	min	ms	12
	max	ms	21
Opening NO	min	ms	9
	max	ms	18
Closing NC	min	ms	17
	max	ms	26
Opening NC	min	ms	7
	max	ms	17

in DC

Closing NO	min	ms	18
	max	ms	25
Opening NO	min	ms	2
	max	ms	3
Closing NC	min	ms	3
	max	ms	5
Opening NC	min	ms	11
	max	ms	17

UL technical data

Rated operational voltage AC (UL) V 600

General USE

Contactor

AC current A 10

Contact rating of auxiliary contacts according to UL A600 - Q600

Ambient conditions

Temperature

Operating temperature

min °C -50
max °C +70

Storage temperature

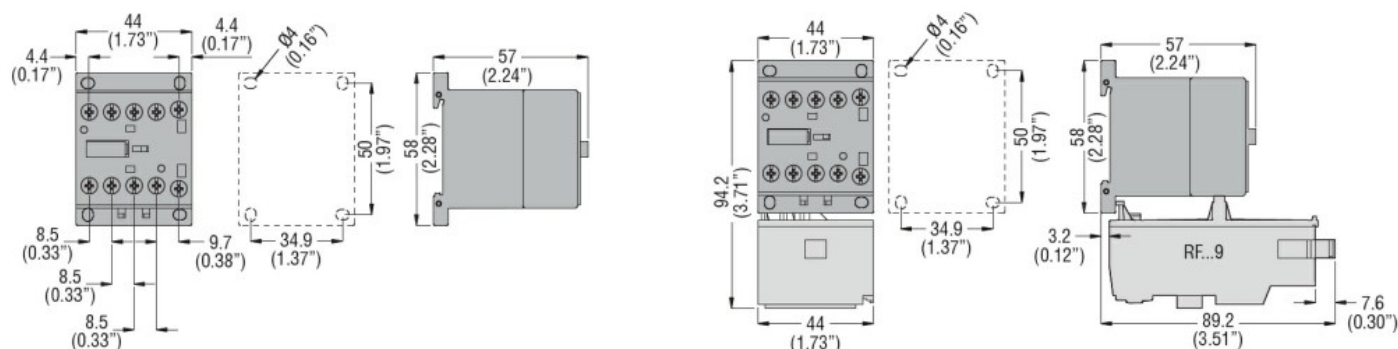
min °C -60
max °C +80

Max altitude m 3000

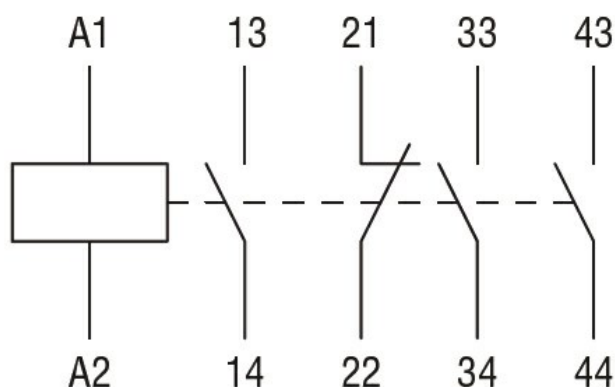
Resistance & Protection

Pollution degree 3

Dimensions



Wiring diagrams



Certifications and compliance

Compliance

CSA C22.2 n° 60947-1
CSA C22.2 n° 60947-5-1
IEC/EN 60947-1
IEC/EN 60947-5-1
UL 60947-1
UL 60947-5-1

Certificates

CCC
cULus
EAC

ETIM classification

ETIM 8.0

EC000196 -
Contactor relay