



Product designation

Power contactor

Product type designation

B115

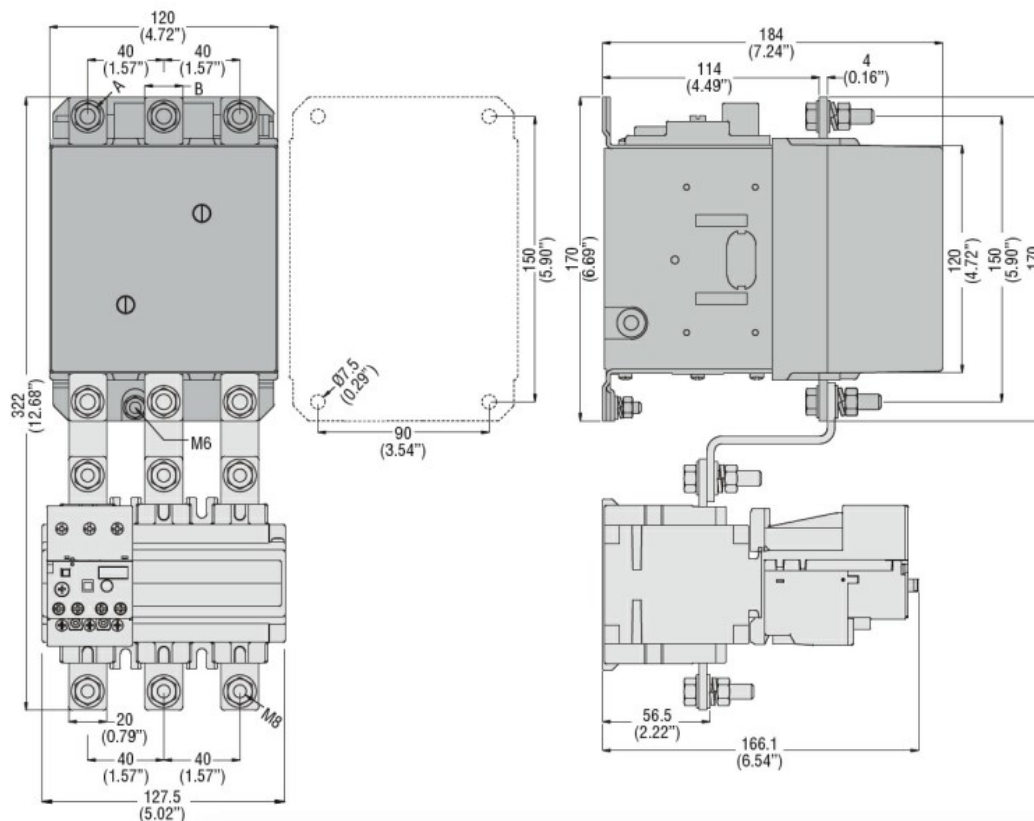
Contact characteristics

Number of poles	Nr.	3
Rated insulation voltage U_i IEC/EN	V	1000
Rated impulse withstand voltage U_{imp}	kV	8
Operational frequency	min	Hz 25
	max	Hz 400
IEC Conventional free air thermal current I_{th}	A	160
Operational current I_e	AC-1 ($\leq 40^\circ\text{C}$)	A 160
	AC-1 ($\leq 55^\circ\text{C}$)	A 150
	AC-1 ($\leq 70^\circ\text{C}$)	A 110
	AC-3 ($\leq 440\text{V } \leq 55^\circ\text{C}$)	A 110
	AC-4 (400V)	A 47
Rated operational power AC-3 ($T \leq 55^\circ\text{C}$)	400V kW	61
Rated operational power AC-1 ($T \leq 40^\circ\text{C}$)	230V kW	57
	400V kW	98
	500V kW	129
	690V kW	173
IEC max current I_e in DC1 with $L/R \leq 1\text{ms}$ with 1 poles in series	75V A	160
	110V A	100
	220V A	—
	330V A	—
	460V A	—
IEC max current I_e in DC1 with $L/R \leq 1\text{ms}$ with 2 poles in series	75V A	160
	110V A	130
	220V A	100
	330V A	—
	460V A	—
IEC max current I_e in DC1 with $L/R \leq 1\text{ms}$ with 3 poles in series	75V A	160
	110V A	130
	220V A	130
	330V A	100
	460V A	—
IEC max current I_e in DC1 with $L/R \leq 1\text{ms}$ with 4 poles in series	75V A	160
	110V A	130
	220V A	130

	330V	A	130
	460V	A	100
IEC max current Ie in DC3-DC5 with L/R ≤ 15ms with 1 poles in series			
	75V	A	140
	110V	A	70
	220V	A	–
	330V	A	–
	460V	A	–
IEC max current Ie in DC3-DC5 with L/R ≤ 15ms with 2 poles in series			
	75V	A	140
	110V	A	100
	220V	A	80
	330V	A	–
	460V	A	–
IEC max current Ie in DC3-DC5 with L/R ≤ 15ms with 3 poles in series			
	75V	A	140
	110V	A	120
	220V	A	100
	330V	A	80
	460V	A	–
IEC max current Ie in DC3-DC5 with L/R ≤ 15ms with 4 poles in series			
	75V	A	140
	110V	A	120
	220V	A	120
	330V	A	120
	460V	A	80
Short-time allowable current for 10s (IEC/EN60947-1)		A	1100
Protection fuse			
	gG (IEC)	A	200
	aM (IEC)	A	125
Making capacity (RMS value)		A	1300
Breaking capacity at voltage			
	440V	A	1300
	500V	A	1100
	690V	A	880
Resistance per pole (average value)		mΩ	0.3
Power dissipation per pole (average value)			
	Ith	W	7.7
	AC-3	W	4
Tightening torque for terminals			
	min	Nm	10
	max	Nm	10
	min	lbin	7.4
	max	lbin	7.4
Max number of wires simultaneously connectable		Nr.	2
Conductor section			
	AWG/Kcmil		
	max		2/0
Power terminal protection according to IEC/EN 60529			IP00
Mechanical features			
Operating position			
	normal allowable		Vertical plan ±30°

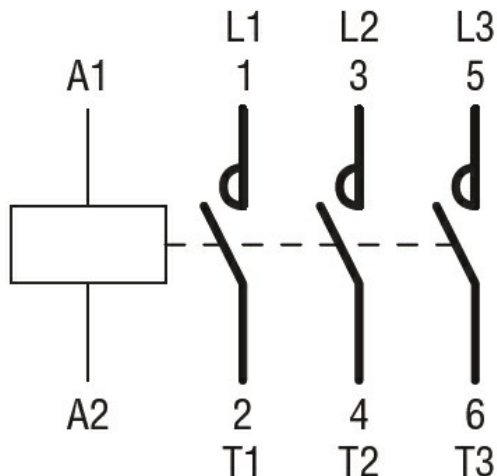
Fixing				Screw
Weight	g			5276
Operations				
Mechanical life	cycles			10000000
Electrical life	cycles			1100000
Safety related data				
Performance level B10d according to EN/ISO 13489-1				
	rated load	cycles	1100000	
	mechanical load	cycles	10000000	
Mirror contats according to IEC/EN 609474-4-1				
Yes				
EMC compatibility				
yes				
AC coil operating				
Rated AC voltage at 50/60Hz			V	60
AC operating voltage				
of 50/60Hz coil powered at 50Hz				
pick-up				
	min	%Us	80	
	max	%Us	110	
drop-out				
	min	%Us	20	
	max	%Us	60	
of 50/60Hz coil powered at 60Hz				
pick-up				
	min	%Us	80	
	max	%Us	110	
drop-out				
	min	%Us	20	
	max	%Us	60	
of 60Hz coil powered at 60Hz				
pick-up				
	min	%Us	80	
	max	%Us	110	
drop-out				
	min	%Us	20	
	max	%Us	60	
AC average coil consumption at 20°C				
of 50/60Hz coil powered at 50Hz				
	in-rush	VA	300	
	holding	VA	10	
of 50/60Hz coil powered at 60Hz				
	in-rush	VA	300	
	holding	VA	10	
Dissipation at holding ≤20°C 50Hz			W	10
DC coil operating				
DC rated control voltage			V	60
DC operating voltage				
pick-up				
	min	%Us	80	
	max	%Us	110	
drop-out				
	min	%Us	20	
	max	%Us	60	
Average coil consumption ≤20°C				

		in-rush	W	300
		holding	W	10
Max cycles frequency				
Mechanical operation		cycles/h		2400
Operating times				
Average time for Us control				
in AC				
Closing NO		min	ms	60
		max	ms	100
Opening NO		min	ms	25
		max	ms	60
in DC				
Closing NO		min	ms	60
		max	ms	100
Opening NO		min	ms	25
		max	ms	60
UL technical data				
Rated operational voltage AC (UL)		V	600	
Full-load current (FLA) for three-phase AC motor		at 480V	A	96
		at 600V	A	99
Yielded mechanical performance				
for three-phase AC motor		200/208V	HP	30
		220/230V	HP	40
		575/600V	HP	100
General USE				
Contactor		AC current	A	160
Short-circuit protection fuse, 600V				
Standard fault		Short circuit current	kA	5
		Fuse rating	A	500
		Fuse class		RK5
Ambient conditions				
Temperature				
Operating temperature		min	°C	-50
		max	°C	70
Storage temperature		min	°C	-60
		max	°C	80
Max altitude		m	3000	
Resistance & Protection				
Pollution degree		3		
Dimensions				



CONTACTOR TYPE	A	B
B115	M6	15 (0.59")
B145	M8	20 (0.79")
B180	M8	20 (0.79")

Wiring diagrams



Certifications and compliance

Compliance

CSA C22.2 n° 60947-1
CSA C22.2 n° 60947-4-1
IEC/EN 60947-1
IEC/EN 60947-4-1
UL 60947-1
UL 60947-4-1

Certificates

CCC
cULus
EAC

ETIM classification

ETIM 8.0

EC000066 -
Power contactor,
AC switching