

Product designation			Rotary cam switches	
Product type designation			7GN40	
General characteristics				
Switching diagram			20 - Dahlander motor 2-speed reversing switch	
N° of elements			6	
Mounting form			U65 - Front mounting with red/yellow handle padlockable in 0 and protection covers	
Contact characteristics				
Rated insulation voltage Ui			IEC/EN UL/CSA	V V 690 600
Rated impulse withstand voltage Uimp			kV	6
Conventional free air thermal current Ith			IEC/EN UL/CSA	A A 40 50
Rated operational voltage			V	480
Rated operational impulse voltage			kV	4
Maximum fuse size for short-circuit protection In (gG)			10kA 15kA 25kA 50kA 63kA	A A A A A 40 40 40 40 40
Rated short time current Icw			1s	kA 1000
Conductivity			10/5 mA/V	
Operational current Ie IEC/EN				
AC1/AC21A			A	40
AC15			110V 220/230V 380/400V 660/690V	A A A A 25 22 12 2
Rated operational power in AC				
Three-phase AC-3			220/230V 380/440V 500/690V	kW kW kW 8 15 15
Single-phase AC-3			110V 220/230V 380/440V	kW kW kW 3 6.5 8
Three-phase AC23A			220/230V 380/440V 500/690V	kW kW kW 8 18.5 22

---

Single-phase AC23A

110V	kW	3
220/230V	kW	6
380/440V	kW	11

---

Rated operational current in DC

DC21A

48V	A	40
60V	A	40
110V	A	6
220V	A	0.9

---

DC23A (poles in series)

24V	A	40 (1)
48V	A	40 (2)
60V	A	40 (3)
110V	A	20 (3)
220V	A	12 (4)

---

DC13

24V	A	40
48V	A	32
60V	A	16
110V	A	3

---

Power dissipation

W 2.0

**Mechanical features**

Terminals screw

M4

Tightening torque for terminals max

Nm 1.2

Conductor size

AWG - Rigid cable

min	AWG	16
Max	AWG	8

---

AWG - Flexible cable

min	AWG	16
Max	AWG	10

---

Conductor size (IEC) - Flexible cable

min	mm <sup>2</sup>	1.5
Max	mm <sup>2</sup>	6

---

Conductor size (IEC) - Rigid cable

min	mm <sup>2</sup>	1.5
Max	mm <sup>2</sup>	10

---

Mechanical life

cycles 5x10<sup>6</sup>

**UL technical data**

Motor power for direct-on-line control

for three-phase motor

120V	HP	5
240V	HP	10
480V	HP	20
600V	HP	20

---

for single-phase motor

120V	HP	2
240V	HP	5

---

**Ambient conditions**

Temperature

Operating temperature

min	°C	-25
max	°C	+55

---

Storage temperature

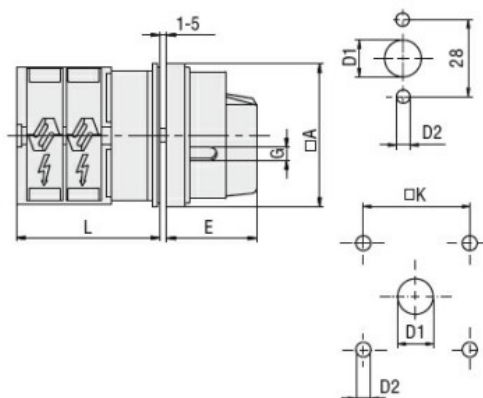
min	°C	-40
max	°C	+70

## Resistance & Protection

Frontal IP degree IP40

Terminals IP degree	IP00
---------------------	------

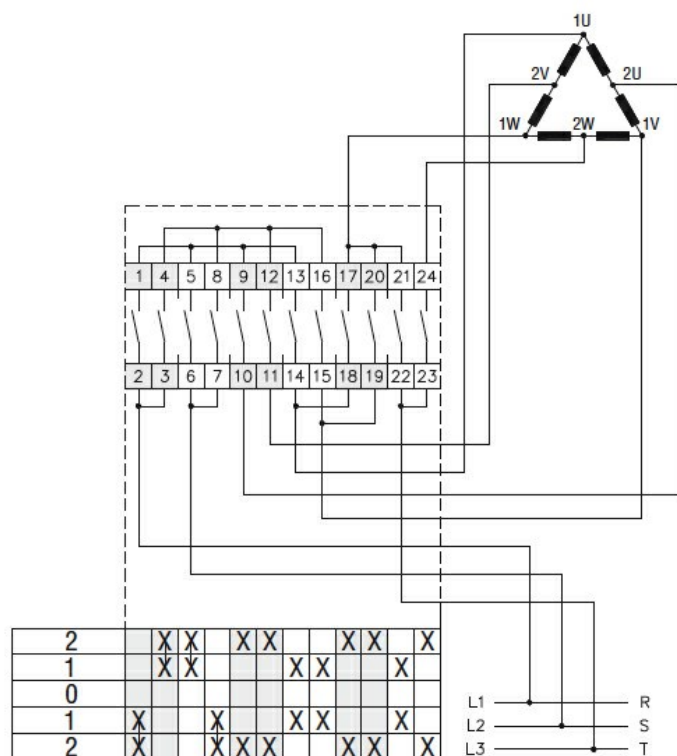
## Dimensions



Standard drillings for  
7GN125.  
Drillings on request for  
4 screws fixing  
(4V version).

Series	Dimensions						L			
	□A	D1	D2	E	G	□K	1	2	3.....12	
7GN12	65	12	5	34.2	5	36	36.1	45.8	55.5	142.8
7GN20	65	12	5	34.2	5	36	36.1	45.8	55.5	142.8
7GN25	65	12	5	34.2	5	36	40.5	54.1	67.7	190.1
7GN32	65	14	5	38	6	48	46.5	61.6	76.7	212.6
7GN40	65	14	5	38	6	48	46.5	61.6	76.7	212.6
7GN63	65	14	5	38	6	48	50.3	68.4	86.5	249.4
7GN125	90	16	6	49	7	68	67.3	96.4	125.5	394.9

## Wiring diagrams



## Certifications and compliance

## Compliance

CSA C22.2 n° 14

IEC/EN/BS 60947-1

IEC/EN/BS 60947-3

IEC/EN/BS 60947-5-1

UL60947-4-1

## Certificates

cCSAus

EAC

$$\overline{UL}$$

ETIM classification

ETIM 8.0

EC001029 -  
Selector switch,  
complete