



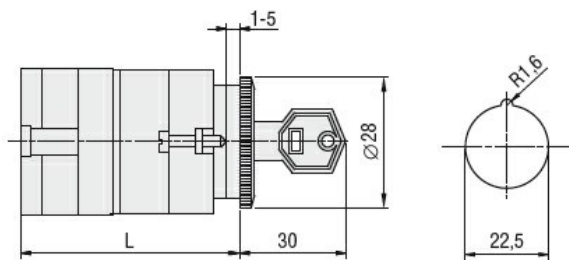
Product designation			Rotary cam switches
Product type designation			GF20
General characteristics			
Switching diagram			92 - ON/OFF switch 4 poles
N° of elements			2
Mounting form			U12 - Front mounting without front plate with key operation for hole diam. 22mm fixing
Contact characteristics			
Rated insulation voltage Ui			
	IEC/EN	V	480
	UL/CSA	V	240
Rated impulse withstand voltage Uimp		kV	4
Conventional free air thermal current Ith			
	IEC/EN	A	20
	UL/CSA	A	15
Rated operational voltage		V	480
Rated operational impulse voltage		kV	4
Maximum fuse size for short-circuit protection In (gG)			
	10kA	A	20
	15kA	A	20
	25kA	A	20
Rated short time current Icw			
	1 s	kA	250
Conductivity			10/5 mA/V
Operational current Ie IEC/EN			
AC1/AC21A		A	20
AC15			
	110V	A	10
	220/230V	A	8
	380/400V	A	6
Rated operational power in AC			
Three-phase AC-3			
	220/230V	kW	3
	380/440V	kW	5
Single-phase AC-3			
	110V	kW	0.5
	220/230V	kW	1.5
	380/440V	kW	2
Three-phase AC23A			

		220/230V	kW	4
		380/440V	kW	7.5
Single-phase AC23A				
		110V	kW	0.75
		220/230V	kW	2
		380/440V	kW	2.5
Rated operational current in DC				
DC21A				
		48V	A	20
		60V	A	20
		110V	A	4
		220V	A	0.7
		440V	A	0.2
DC13				
		24V	A	6
		48V	A	6
		60V	A	3
		110V	A	1
		220V	A	0.4
		440V	A	0.15
Power dissipation			W	0.8
Mechanical features				
Terminals screw			M3	
Tightening torque for terminals max			Nm	0.5
Conductor size				
AWG - Rigid cable				
		min	AWG	20
		Max	AWG	12
AWG - Flexible cable				
		min	AWG	20
		Max	AWG	12
Conductor size (IEC) - Flexible cable				
		min	mm <sup>2</sup>	0.5
		Max	mm <sup>2</sup>	2.5
Conductor size (IEC) - Rigid cable				
		min	mm <sup>2</sup>	0.5
		Max	mm <sup>2</sup>	2.5
Mechanical life			cycles	1x10 <sup>6</sup>
UL technical data				
Motor power for direct-on-line control				
for three-phase motor				
		240V	HP	3
for single-phase motor				
		240V	HP	1
Ambient conditions				
Temperature				
Operating temperature				
		min	°C	-25
		max	°C	+55
Storage temperature				
		min	°C	-40
		max	°C	+70
Resistance & Protection				
Frontal IP degree			IP40	

Terminals IP degree

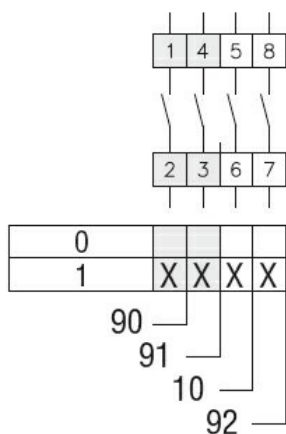
IP20

## Dimensions



Series	L			
	1	2	3...8	
<b>GF20</b>	54.5	68	81.5	149

## Wiring diagrams



## Certifications and compliance

### Compliance

CSA C22.2 n° 14

IEC/EN/BS 60947-1

IEC/EN/BS 60947-3

IEC/EN/BS 60947-5-1

UL60947-4-1

### Certificates

cULus

EAC

## ETIM classification

ETIM 8.0

EC001029 -  
Selector switch,  
complete