



Product designation	Rotary cam switches		
Product type designation	GF10		
General characteristics			
Switching diagram	03 - ON/OFF spring return switch 3 poles		
N° of elements	2		
Mounting form	U47 - Snap on fron mounting with black handle for hole diam. 22mm finxing		
Contact characteristics			
Rated insulation voltage Ui	IEC/EN	V	480
	UL/CSA	V	240
Rated impulse withstand voltage Uimp		kV	4
Conventional free air thermal current Ith	IEC/EN	A	10
	UL/CSA	A	10
Rated operational voltage		V	480
Rated operational impulse voltage		kV	4
Maximum fuse size for short-circuit protection In (gG)	10kA	A	16
Rated short time current Icw	1s	kA	250
Conductivity			10/5 mA/V
Operational current Ie IEC/EN	AC1/AC21A		
		A	10
AC15	110V	A	5
	220/230V	A	3
	380/400V	A	2
Rated operational power in AC	Three-phase AC-3		
	220/230V	kW	1.5
	380/440V	kW	2.2
	Single-phase AC-3		
	110V	kW	0.3
	220/230V	kW	0.55
	380/440V	kW	0.75
	Three-phase AC23A		
	220/230V	kW	1.8
	380/440V	kW	3

Single-phase AC23A

110V	kW	0.7
220/230V	kW	0.75
380/440V	kW	1.1

Rated operational current in DC

DC21A

48V	A	10
60V	A	7
110V	A	2
220V	A	0.7
440V	A	0.2

DC13

24V	A	3
48V	A	3
60V	A	2
110V	A	1
220V	A	0.3
440V	A	0.1

Power dissipation	W	0.4
-------------------	---	-----

Mechanical features

Terminals screw	2.5M
-----------------	------

Tightening torque for terminals max	Nm	0.4
-------------------------------------	----	-----

Conductor size

AWG - Rigid cable

min	AWG	20
Max	AWG	14

AWG - Flexible cable

min	AWG	20
Max	AWG	14

Conductor size (IEC) - Flexible cable

min	mm ²	0.5
Max	mm ²	1.5

Conductor size (IEC) - Rigid cable

min	mm ²	0.5
Max	mm ²	1.5

Mechanical life	cycles	1x10 ⁶
-----------------	--------	-------------------

UL technical data

Motor power for direct-on-line control

for three-phase motor

240V	HP	2
------	----	---

for single-phase motor

240V	HP	0.75
------	----	------

Ambient conditions

Temperature

Operating temperature

min	°C	-25
max	°C	+55

Storage temperature

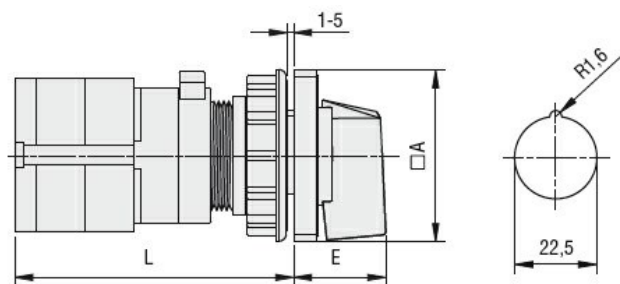
min	°C	-40
max	°C	+70

Resistance & Protection

Frontal IP degree	IP40
-------------------	------

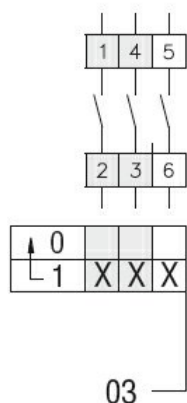
Terminals IP degree	IP20
---------------------	------

Dimensions



Series	Dimensions		L			
	□A	E	1	2	3...8	
GF10	30	18.5	60	72	84	144
GF20	48	26.5	56	69.5	83	150.5

Wiring diagrams



Certifications and compliance

Compliance

CSA C22.2 n° 14
IEC/EN/BS 60947-1
IEC/EN/BS 60947-3
IEC/EN/BS 60947-5-1
UL60947-4-1

Certificates

cULus
EAC

ETIM classification

ETIM 8.0

EC001029 -
Selector switch,
complete