

Product designation	Rotary cam switches		
Product type designation	7GN20		
General characteristics			
Switching diagram	54 - Changeover switch without 0 1 pole		
N° of elements	1		
Mounting form	U47 - Snap on front mounting with black handle for hole diam. 22mm finxing		
Contact characteristics			
Rated insulation voltage Ui	IEC/EN UL/CSA	V V	690 600
Rated impulse withstand voltage Uimp		kV	6
Conventional free air thermal current Ith	IEC/EN UL/CSA	A A	20 20
Rated operational voltage		V	480
Rated operational impulse voltage		kV	4
Maximum fuse size for short-circuit protection In (gG)	10kA 15kA 25kA	A A A	20 16 16
Rated short time current Icw	1s	kA	250
Conductivity	10/5 mA/V		
Operational current Ie IEC/EN			
AC1/AC21A		A	20
AC15	110V 220/230V 380/400V 660/690V	A A A A	10 8 6 1.5
Rated operational power in AC			
Three-phase AC-3	220/230V 380/440V 500/690V	kW kW kW	3 5.5 5.5
Single-phase AC-3	110V 220/230V 380/440V	kW kW kW	0.8 2.2 3
Three-phase AC23A	220/230V 380/440V 500/690V	kW kW kW	5 7.5 7.5
Single-phase AC23A	110V	kW	0.8

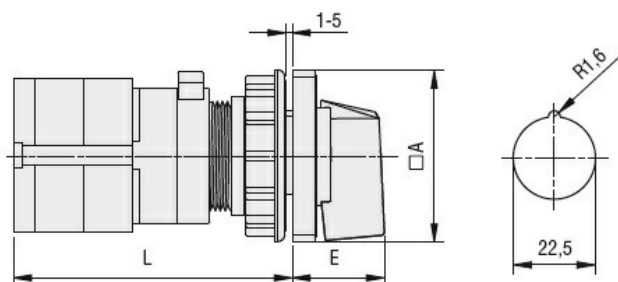
		220/230V	kW	2.5
		380/440V	kW	3.7
Rated operational current in DC				
DC21A				
		48V	A	20
		60V	A	20
		110V	A	4
		220V	A	0.6
		440V	A	0.25
DC23A (poles in series)				
		24V	A	20 (1)
		48V	A	20 (2)
		60V	A	20 (3)
		110V	A	10 (3)
		220V	A	8 (4)
DC13				
		24V	A	20
		48V	A	16
		60V	A	12
		110V	A	1
		220V	A	0.4
		440V	A	0.15
Power dissipation			W	0.8
Mechanical features				
Terminals screw				M3
Tightening torque for terminals max			Nm	0.5
Conductor size				
AWG - Rigid cable				
		min	AWG	20
		Max	AWG	12
AWG - Flexible cable				
		min	AWG	20
		Max	AWG	14
Conductor size (IEC) - Flexible cable				
		min	mm <sup>2</sup>	0.5
		Max	mm <sup>2</sup>	2.5
Conductor size (IEC) - Rigid cable				
		min	mm <sup>2</sup>	0.5
		Max	mm <sup>2</sup>	2.5
Mechanical life			cycles	5x10 <sup>6</sup>
UL technical data				
Motor power for direct-on-line control				
for three-phase motor				
		120V	HP	1.5
		240V	HP	3
		480V	HP	7.5
		600V	HP	10
for single-phase motor				
		120V	HP	0.75
		240V	HP	2
Ambient conditions				
Temperature				
Operating temperature				
		min	°C	-25

Storage temperature	max	°C	+55
	min	°C	-40
	max	°C	+70

#### Resistance & Protection

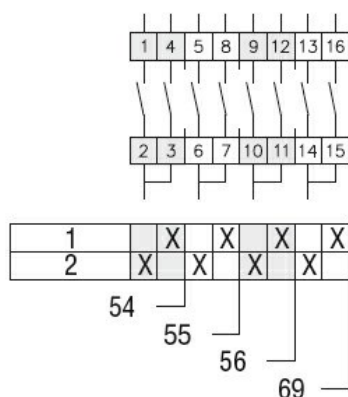
Frontal IP degree	IP40
Terminals IP degree	IP00

#### Dimensions



Series	Dimensions		L			
	□A	E	1	2	3...8	
7GN12	48	26.5	58	67.7	77.4	125.9
7GN20	48	26.5	58	67.7	77.4	125.9
7GN25	48	26.5	62.4	76	89.6	157.6

#### Wiring diagrams



#### Certifications and compliance

##### Compliance

CSA C22.2 n° 14
IEC/EN/BS 60947-1
IEC/EN/BS 60947-3
IEC/EN/BS 60947-5-1
UL60947-4-1

##### Certificates

cCSAus
EAC
UL

#### ETIM classification

ETIM 8.0

EC001029 -  
Selector switch,  
complete